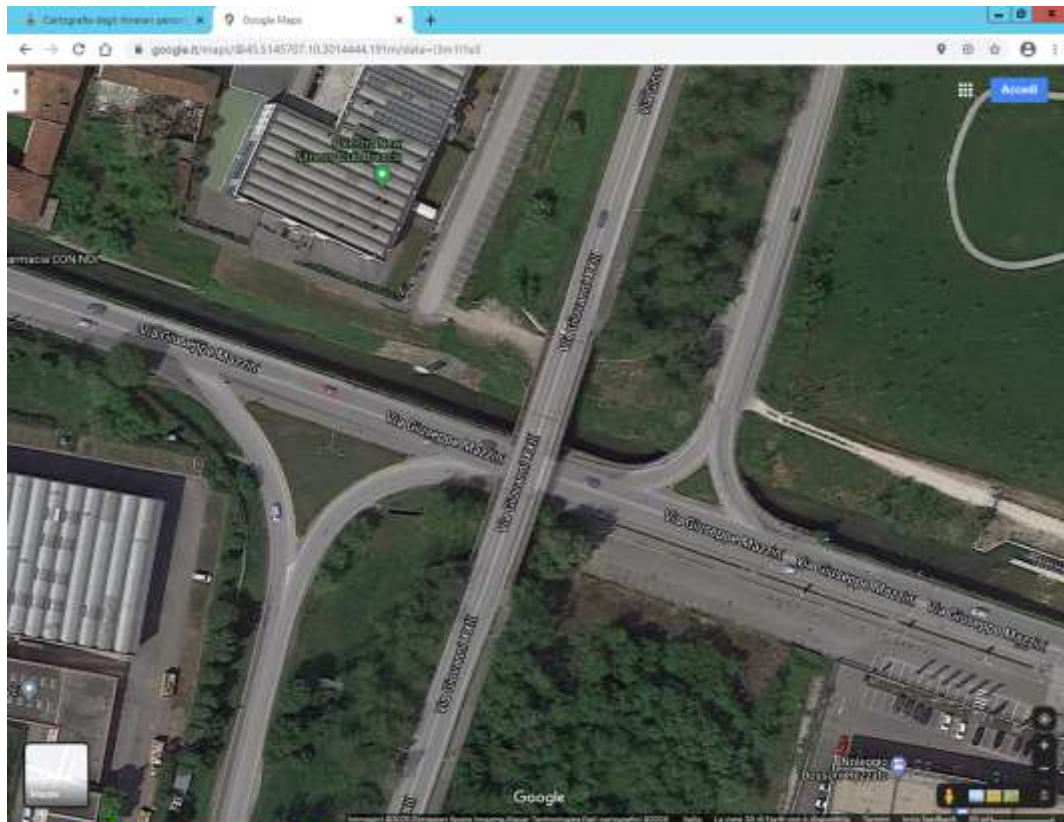


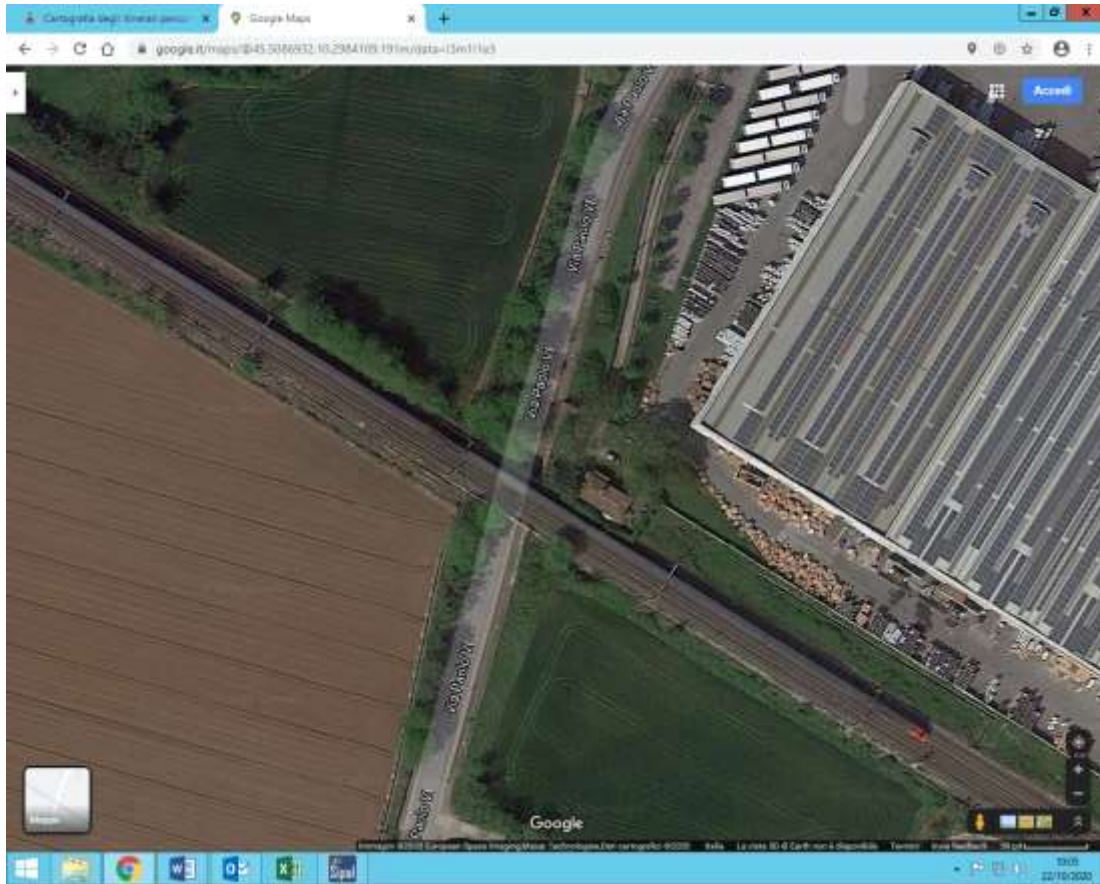
1) SOTTOPASSO VIA MAZZINI

LARGHEZZA CARREGGIATA MT 7.40 - **ALTEZZA MINIMA MT 5.05**



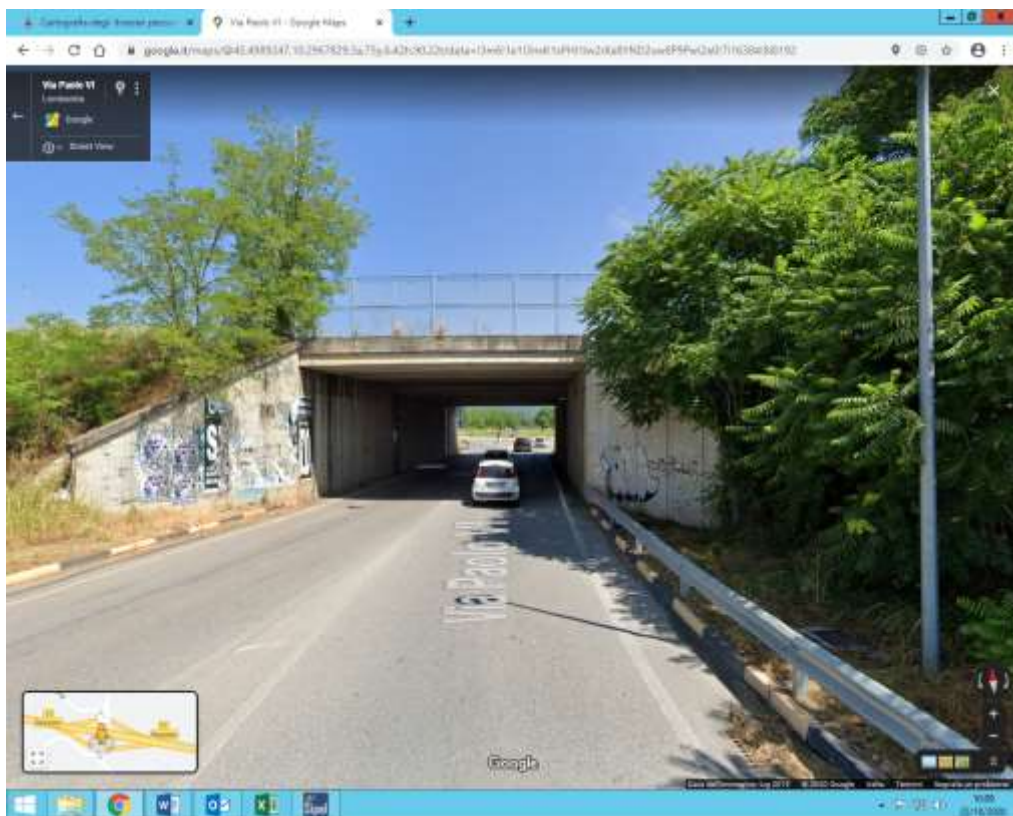
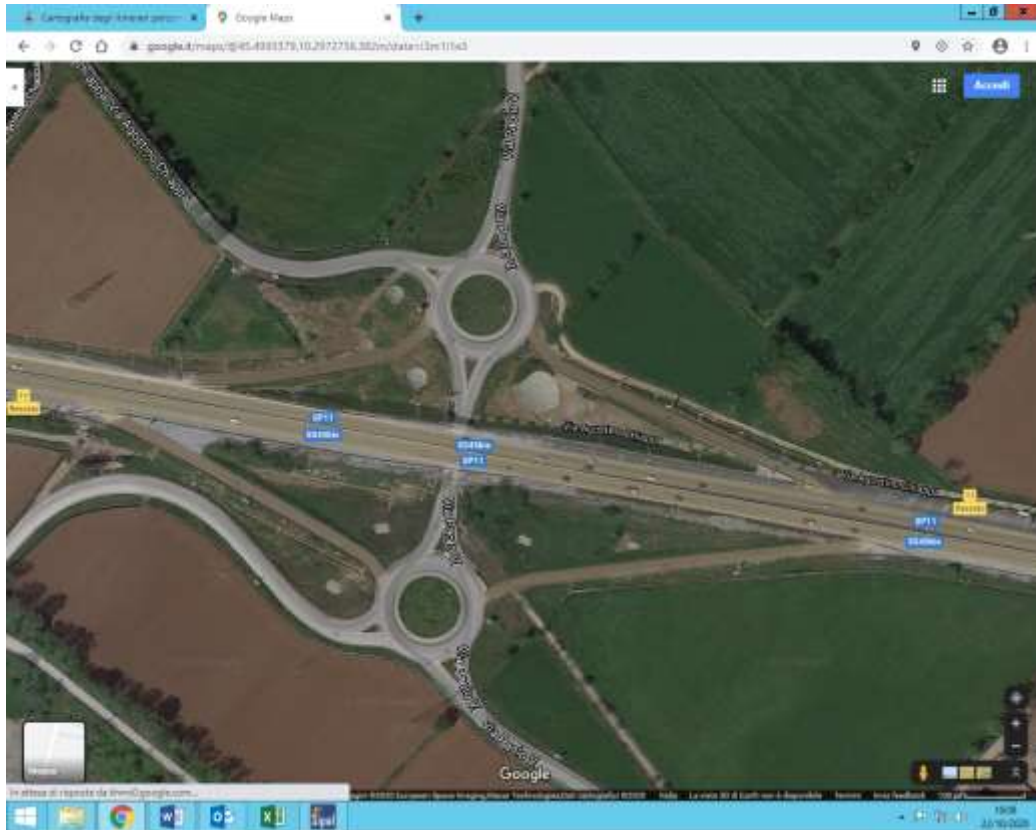
2) SOTTOPASSO VIA PAOLO VI DELLA FERROVIA

LARGHEZZA CARREGGIATA MT 8,90 - ALTEZZA MINIMA MT 5,00



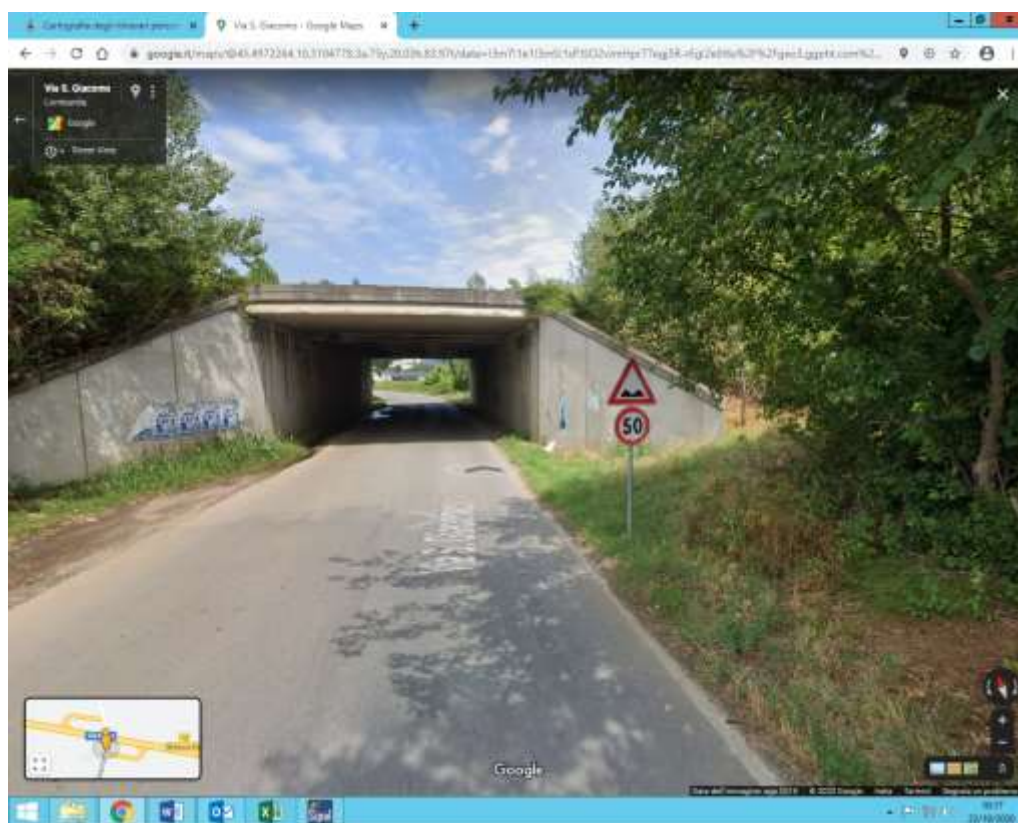
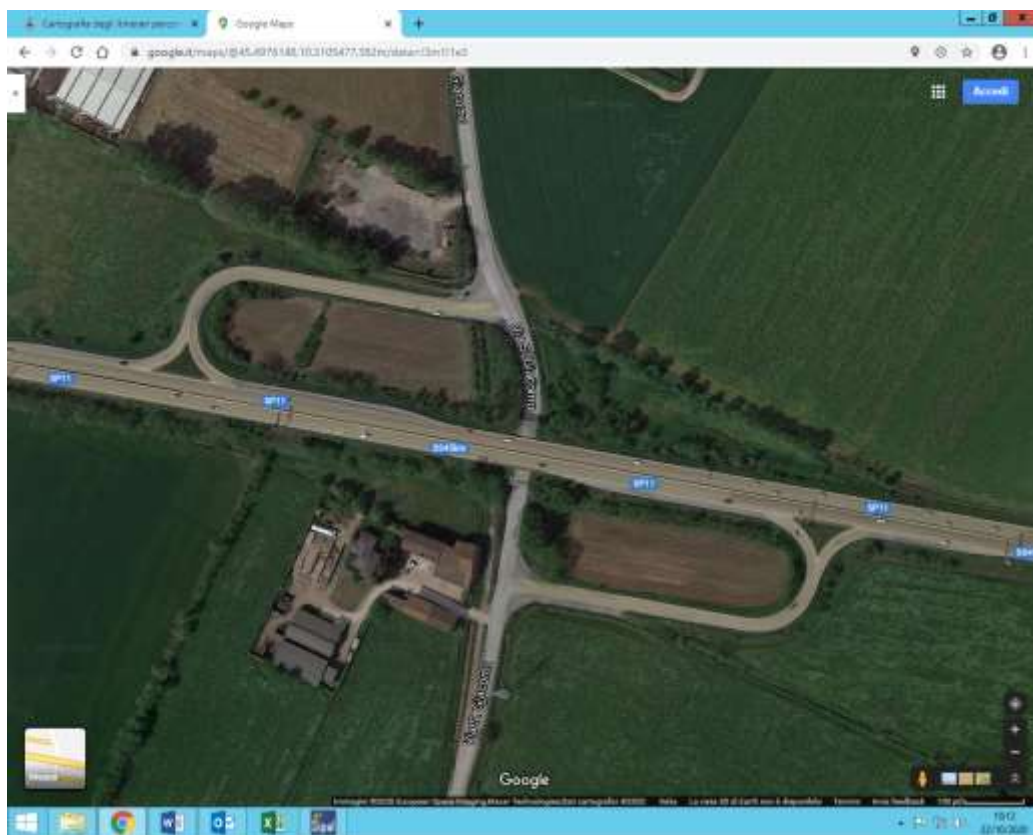
3) SOTTOPASSO VIA PAOLO VI DELLA TANGENZIALE SUD

LARGHEZZA CARREGGIATA MT 9,50 - **ALTEZZA MINIMA MT 4,60**



4) SOTTOPASSO VIA SAN GIACOMO

**LARGHEZZA CARREGGIATA MT 9,50 CON BANCHINA STERRATA SOLO
CARREGGIATA 8,00 - ALTEZZA MINIMA MT 4,45**



5) SOTTOPASSO VIA MATTEOTTI

LARGHEZZA CARREGGIATA MT 6,00 - ALTEZZA MINIMA MT 5,00

